



# Maddison House, Church Street, Reigate

£325,000 - £450,000





Introducing Maddison House, a boutique development of six contemporary apartments in central Reigate, thoughtfully converted to offer modern comfort and convenience. With four two bedroom and two one bedroom homes, all with the added bonus of allocated parking.







Maddison House is an exclusive collection of six newly converted apartments, thoughtfully designed with modern living in mind. Located moments from Reigate's bustling High Street, these homes offer high-quality finishes throughout.

Located on the first and second floors, with large sash windows, the apartments are flooded with natural light. The high ceilings create a feeling of space and the neutral tones are welcoming. The open plan kitchen/living spaces have two tone units in contrasting charcoal and stone grey, with white galaxy quartz worktops, which compliment the units beautifully. The kitchens are fully fitted with appliances, including ceramic induction hobs, dishwashers, fridge freezers, ovens and microwaves.

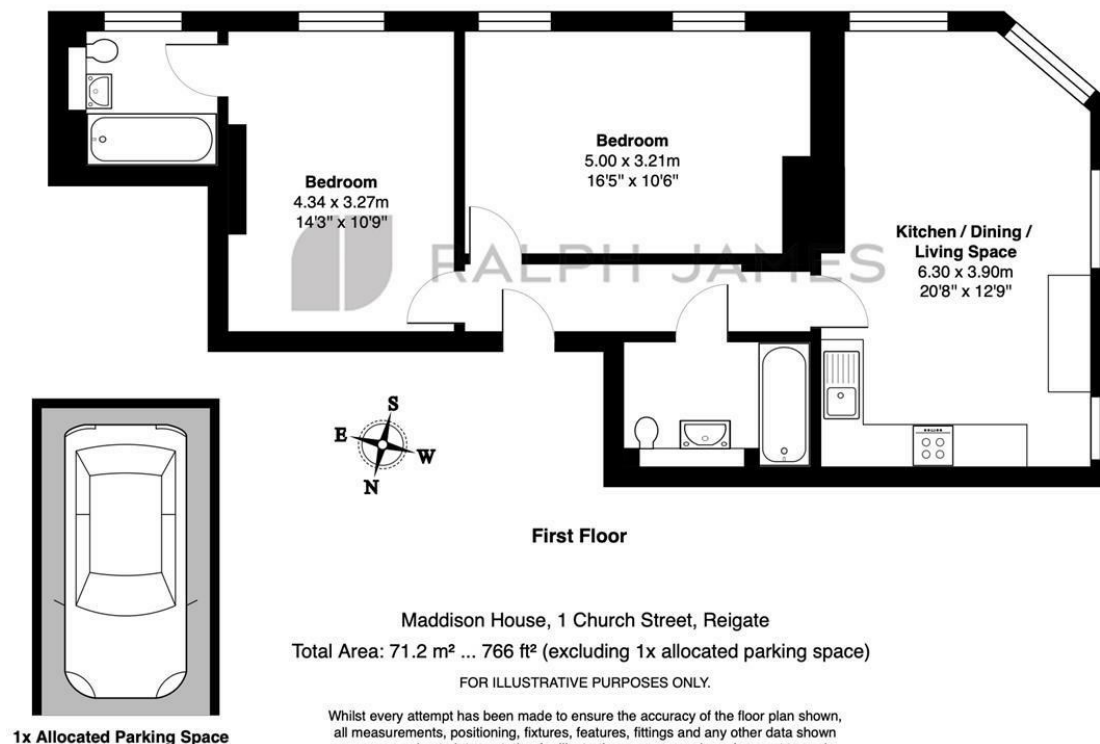
Fitted with luxury vinyl flooring in European Oak throughout the living space, and the contrast of soft carpets to the bedrooms, creating a touch of luxury underfoot. The bathrooms are fitted with Scudo wall hung vanity units and Scudo sanitaryware, whilst the white porcelain floor tiles makes the spaces feel fresh.

Outside, there is a communal terrace which leads up to the Castle grounds, home to the ruins of Reigate Castle. Despite its partial state, the castle remains charming and makes a delightful spot for a picnic or an afternoon stroll. Each apartment comes with an allocated parking space to the rear and there are two further spaces with EV charging points which are for communal use.



## Need to know

- Newly converted development of just six stunning apartments
- A mixture of one & two bedrooms on the first and second floors
- High ceilings and large sash windows
- Some apartments with vaulted ceilings adding to the feeling of space and light
- Central Reigate location offering excellent convenience for the High Street and train station
- Allocated parking for each apartment as well as two EV charging points
- Stunning, two tone, matt finish kitchen units in charcoal and stone grey with complimentary white galaxy quartz worktops
- European oak style, luxury vinyl flooring in the living space with soft 'glacier white' carpets to the bedrooms
- Communal outside terrace, leading to the Castle Grounds



## Interested?

reigate@ralphjames.co.uk  
01737 333677

ralphjames.co.uk

